

Updating Linux through WinSCP

Updating the Linux OS through SSH
without using the web interface

Overview

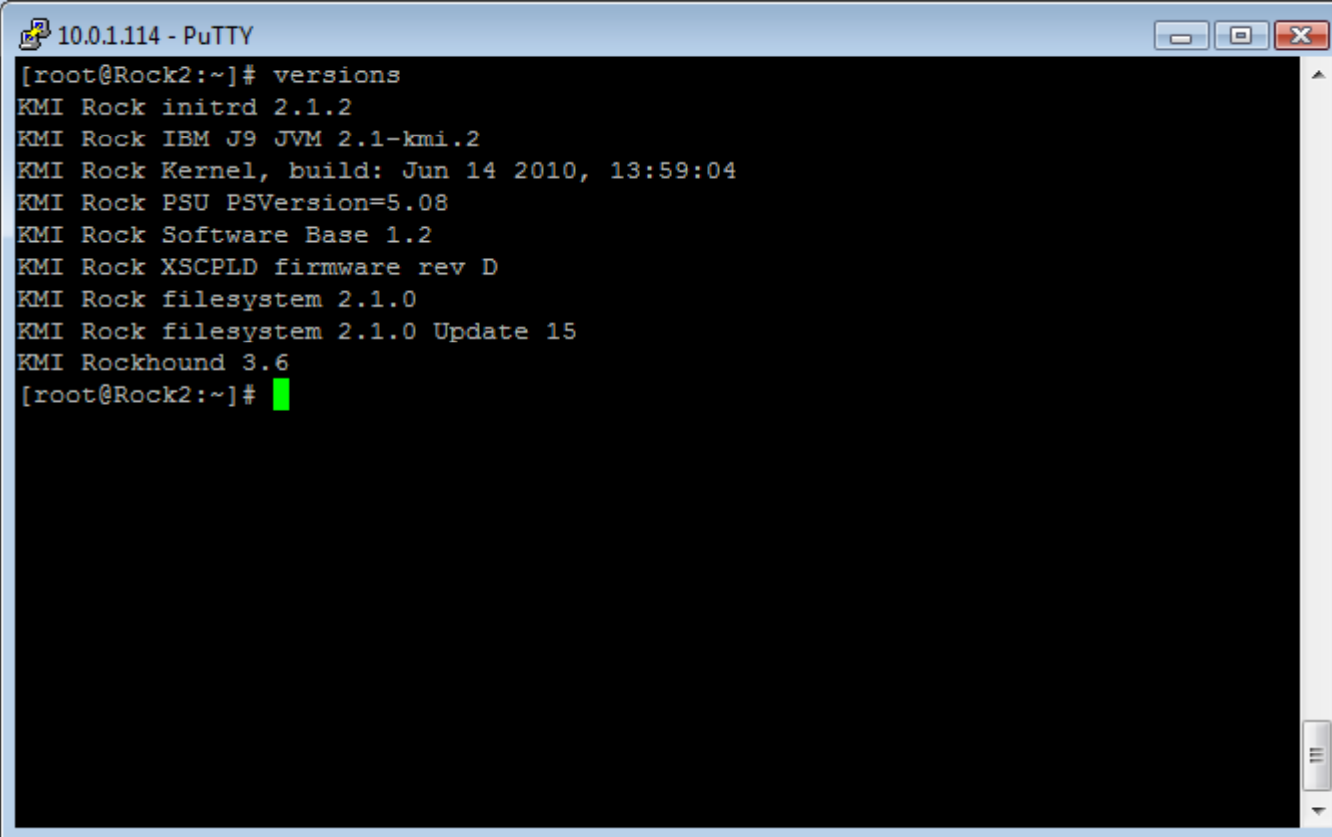
Software updates can be installed remotely through the web interface or through SSH.

The software updates will be either Rockhound updates or updates to the underlying Linux Operating System.

This tutorial describes how to install updates to the Linux OS using WinSCP.

Check versions

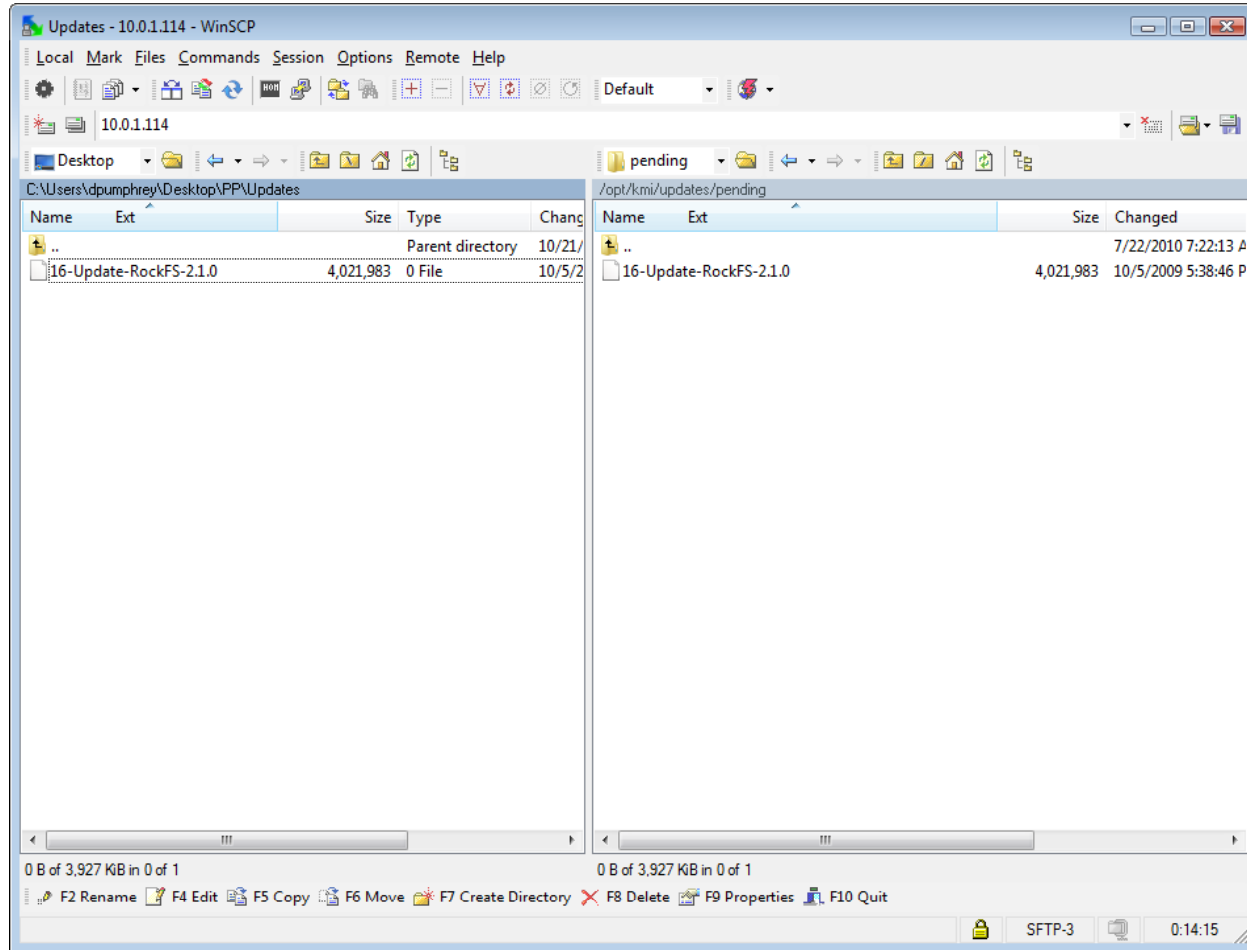
The first thing to do is to check versions using the Linux “versions” command. You are looking for the “KMI Rock filesystem 2.1.0 Update xxx” line. In this example, we are at Update 15.



```
10.0.1.114 - PuTTY
[root@Rock2:~]# versions
KMI Rock initrd 2.1.2
KMI Rock IBM J9 JVM 2.1-kmi.2
KMI Rock Kernel, build: Jun 14 2010, 13:59:04
KMI Rock PSU PSVersion=5.08
KMI Rock Software Base 1.2
KMI Rock XSCPLD firmware rev D
KMI Rock filesystem 2.1.0
KMI Rock filesystem 2.1.0 Update 15
KMI Rockhound 3.6
[root@Rock2:~]#
```

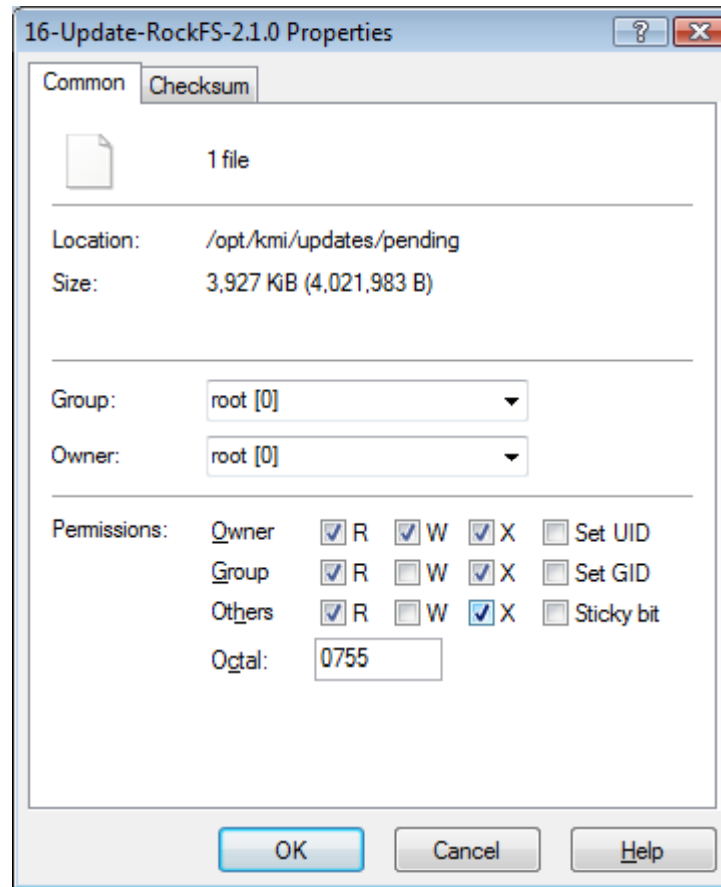
Copy the update

If an update is required, use WinSCP to copy the update file from your computer (on the left) to the digitizer directory /opt/kmi/updates/pending (on the right)



Set permissions

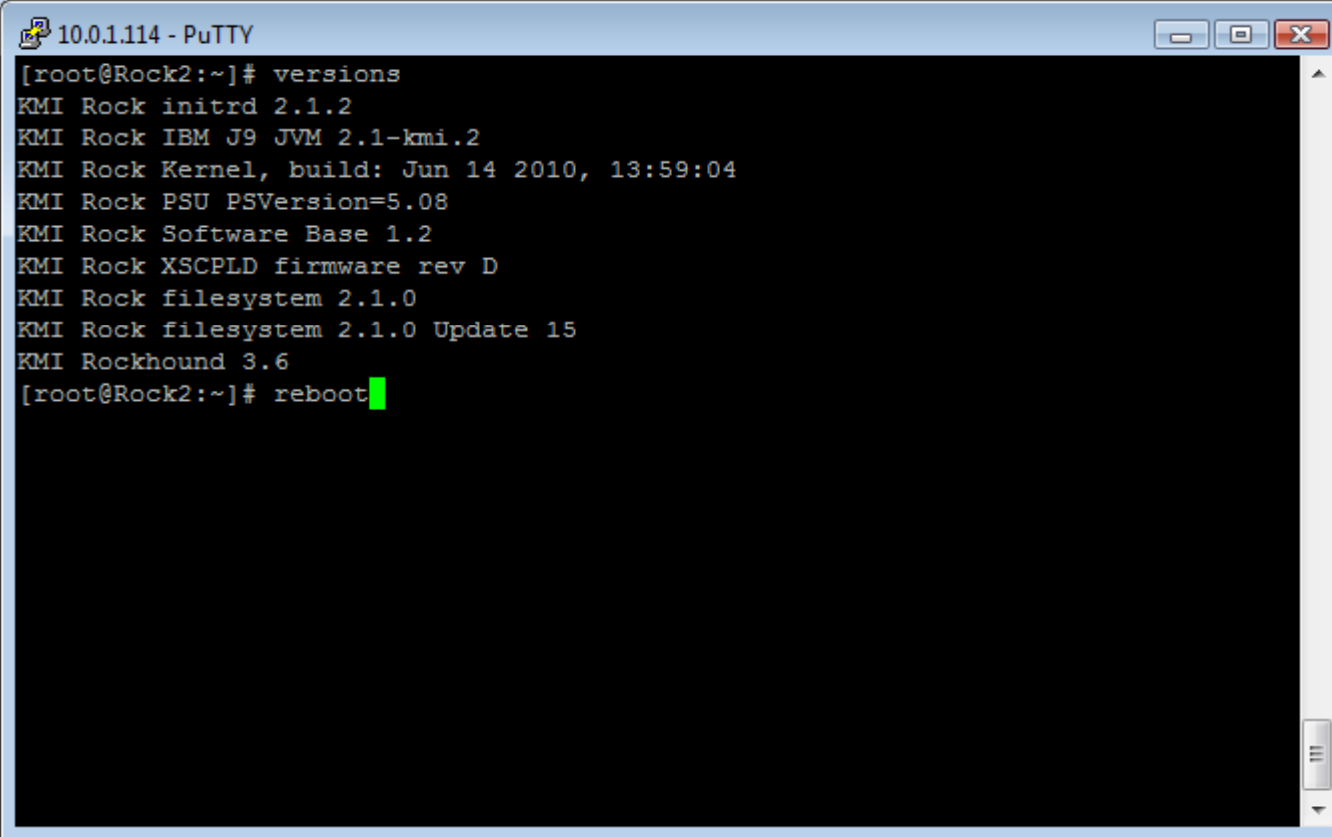
Set permissions by right-clicking the file on the digitizer and selecting “Properties”. Then select the “X” (execute) permission for all levels and then press OK



Reboot to install

Back at the Linux prompt, type “reboot” to install the update. This will take approximately 5 minutes.

When done, check the versions with the “versions” command to be sure that the update installed correctly.



```
10.0.1.114 - PuTTY
[root@Rock2:~]# versions
KMI Rock initrd 2.1.2
KMI Rock IBM J9 JVM 2.1-kmi.2
KMI Rock Kernel, build: Jun 14 2010, 13:59:04
KMI Rock PSU PSVersion=5.08
KMI Rock Software Base 1.2
KMI Rock XSCPLD firmware rev D
KMI Rock filesystem 2.1.0
KMI Rock filesystem 2.1.0 Update 15
KMI Rockhound 3.6
[root@Rock2:~]# reboot
```